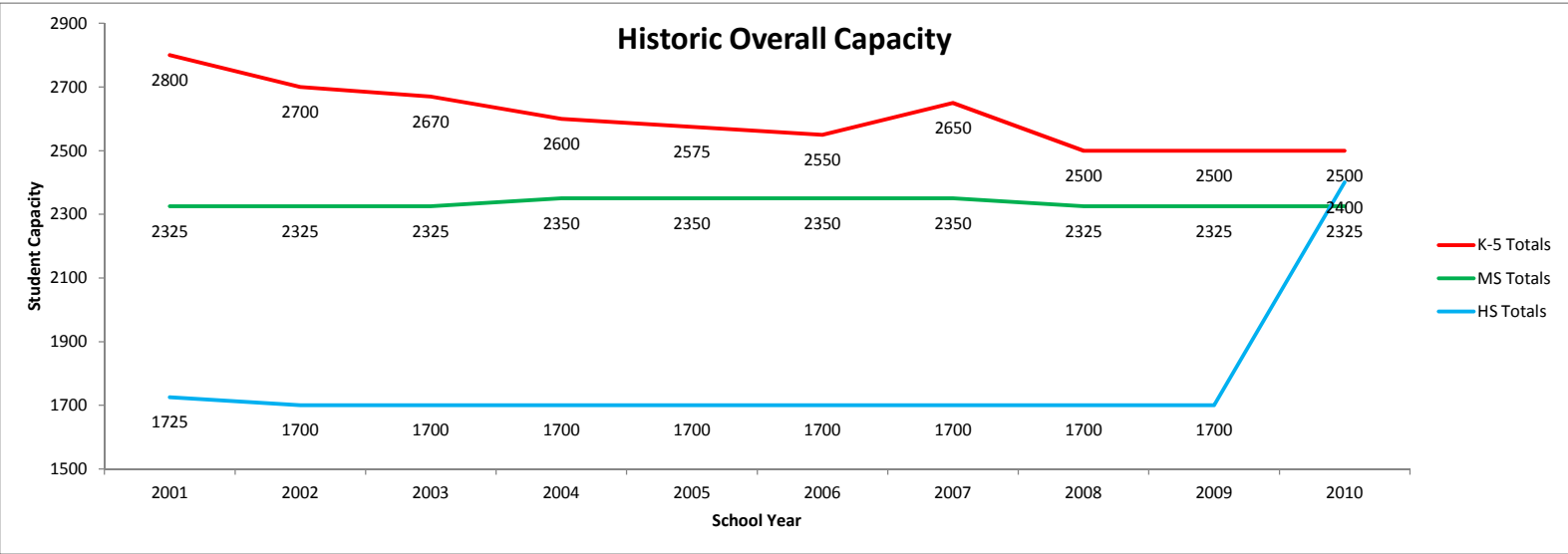
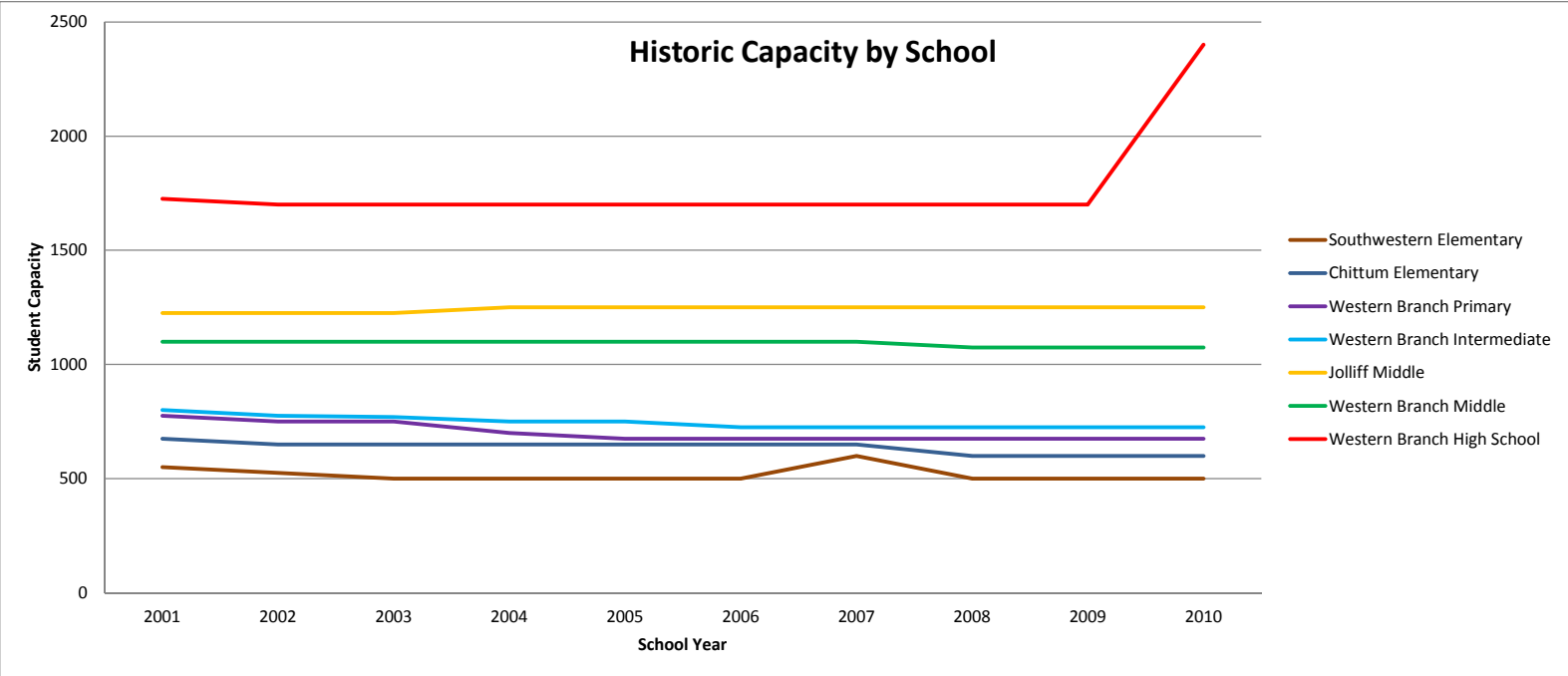
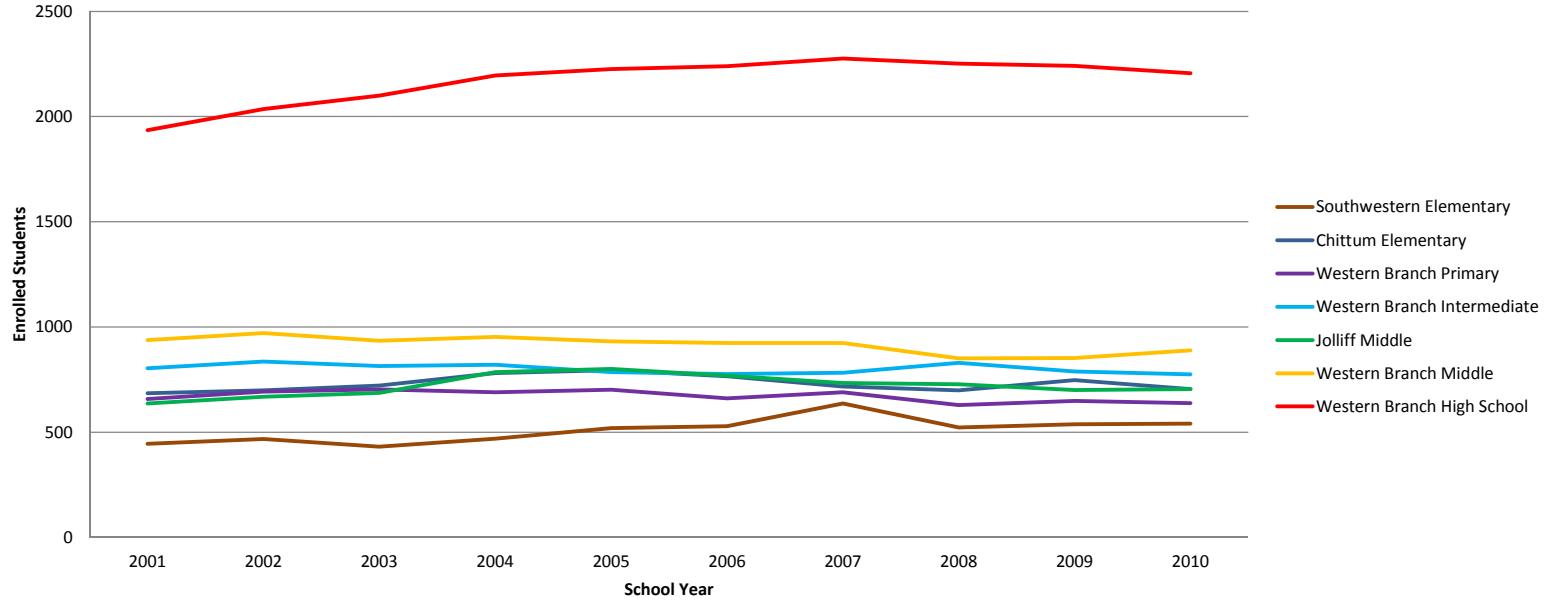


Historic School Enrollment Data
Prepared by Kimley-Horn and Associates
19-Aug-11

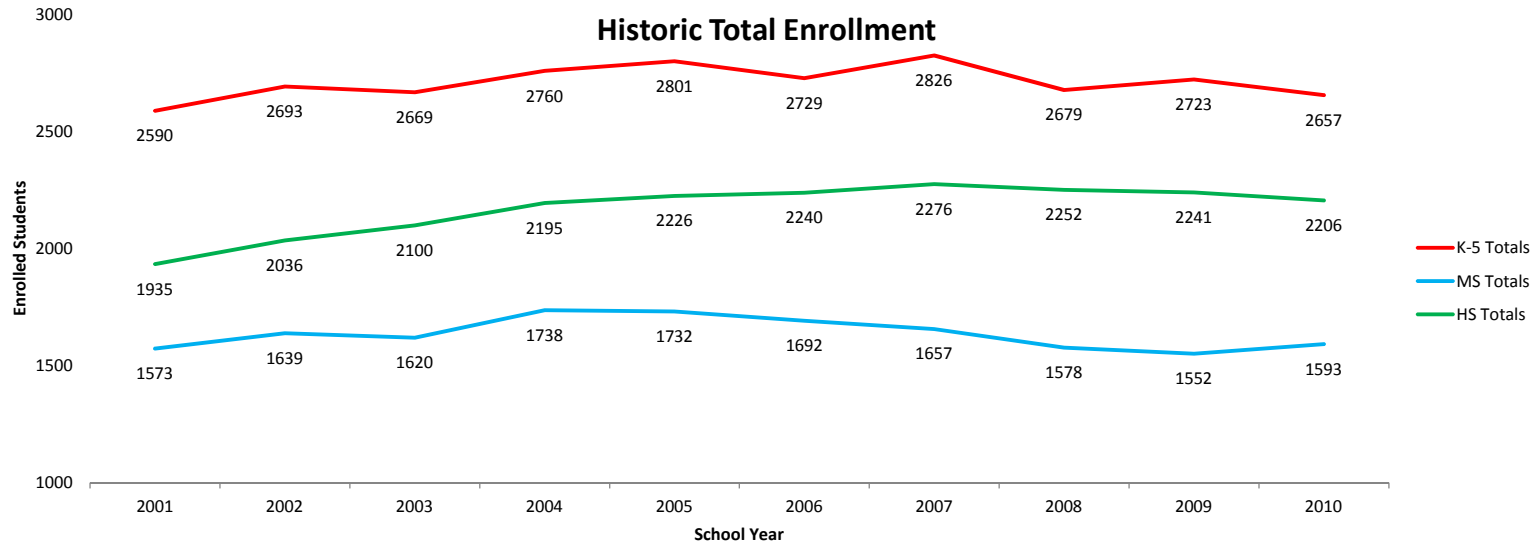
		Southwest	Chittum	WB Prim	WB Inter	K-5 Totals	Jolliff MS	WB MS	Mid Totals	WBHS
2010	Capacity	500	600	675	725	2500	1250	1075	2325	2400
	Enrollment	540	704	638	775	2657	705	888	1593	2206
	Delta	40	104	-37	50	157	-545	-187	-732	-194
	Percent	108%	117%	95%	107%	106%	56%	83%	69%	92%
2009	Capacity	500	600	675	725	2500	1250	1075	2325	1700
	Enrollment	538	748	648	789	2723	700	852	1552	2241
	Delta	38	148	-27	64	223	-550	-223	-773	541
	Percent	108%	125%	96%	109%	109%	56%	79%	67%	132%
2008	Capacity	500	600	675	725	2500	1250	1075	2325	1700
	Enrollment	522	698	629	830	2679	728	850	1578	2252
	Delta	22	98	-46	105	179	-522	-225	-747	552
	Percent	104%	116%	93%	114%	107%	58%	79%	68%	132%
2007	Capacity	600	650	675	725	2650	1250	1100	2350	1700
	Enrollment	637	717	690	782	2826	734	923	1657	2276
	Delta	37	67	15	57	176	-516	-177	-693	576
	Percent	106%	110%	102%	108%	107%	59%	84%	71%	134%
2006	Capacity	500	650	675	725	2550	1250	1100	2350	1700
	Enrollment	528	765	660	776	2729	769	923	1692	2240
	Delta	28	115	-15	51	179	-481	-177	-658	540
	Percent	106%	118%	98%	107%	107%	62%	84%	72%	132%
2005	Capacity	500	650	675	750	2575	1250	1100	2350	1700
	Enrollment	519	795	701	786	2801	801	931	1732	2226
	Delta	19	145	26	36	226	-449	-169	-618	526
	Percent	104%	122%	104%	105%	109%	64%	85%	74%	131%
2004	Capacity	500	650	700	750	2600	1250	1100	2350	1700
	Enrollment	469	780	690	821	2760	786	952	1738	2195
	Delta	-31	130	-10	71	160	-464	-148	-612	495
	Percent	94%	120%	99%	109%	106%	63%	87%	74%	129%
2003	Capacity	500	650	750	770	2670	1225	1100	2325	1700
	Enrollment	431	721	703	814	2669	686	934	1620	2100
	Delta	-69	71	-47	44	-1	-539	-166	-705	400
	Percent	86%	111%	94%	106%	100%	56%	85%	70%	124%
2002	Capacity	525	650	750	775	2700	1225	1100	2325	1700
	Enrollment	467	698	693	835	2693	668	971	1639	2036
	Delta	-58	48	-57	60	-7	-557	-129	-686	336
	Percent	89%	107%	92%	108%	100%	55%	88%	70%	120%
2001	Capacity	550	675	775	800	2800	1225	1100	2325	1725
	Enrollment	444	685	657	804	2590	636	937	1573	1935
	Delta	-106	10	-118	4	-210	-589	-163	-752	210
	Percent	81%	101%	85%	101%	93%	52%	85%	68%	112%
2000	Capacity	550	700	775	800	2825	0	1100	1100	1725
	Enrollment	480	614	677	806	2577	0	1509	1509	1886
	Delta	-70	-86	-98	6	-248	0	409	409	161
	Percent	87%	88%	87%	101%	91%	0%	137%	137%	109%



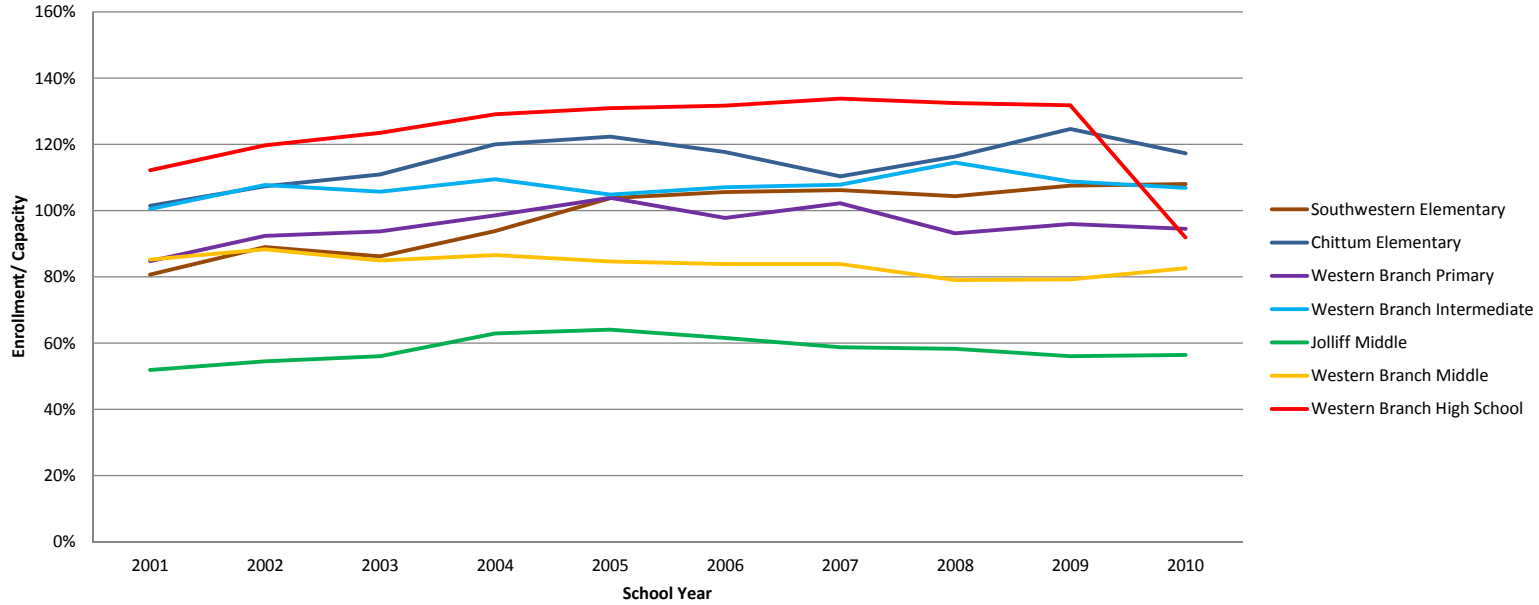
Historic School Enrollment



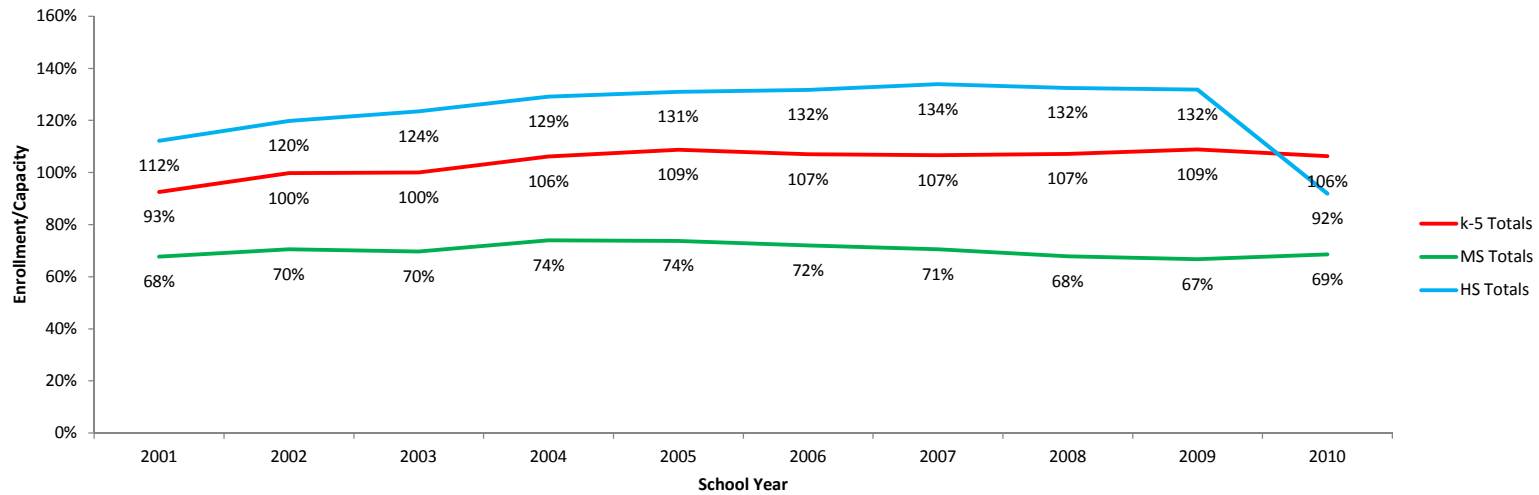
Historic Total Enrollment



Historic Enrollment vs. Capacity (by school)



Historic Overall Enrollment vs. Capacity



BRECKINRIDGE STUDENT GENERATION RATES
19-Aug-11

Residential Program

Product Type	Units	Density	Acres	Avg. SF	2013	2014	2015	2016	2017	2018	2019	2020	2021	2022	2023	2024	2025	2026	Total
Large Lot SFD	108	2.49	43.4	3,000	5	15	15	15	12	12	10	10	10	4	0	0	0	0	108
Medium Lot SFD	69	3.76	18.4	2,450	10	15	15	15	10	4	0	0	0	0	0	0	0	0	69
Small Lot Cottages/Condos	249	6.57	37.9	2,100	15	20	25	25	25	25	25	25	25	20	19	0	0	0	249
Townhome Condos	213	12	17.8	1,650	15	20	20	20	20	20	20	20	20	18	0	0	0	0	213
Multiplex Condos	308	12	25.7	1,550	0	0	15	15	15	20	25	25	30	30	30	35	35	33	308
Garden Apartments	600	20	30.0	980	150	150	0	0	0	0	150	150	0	0	0	0	0	0	600
Total	1,547				195	220	90	90	82	81	230	230	85	74	67	35	35	33	1,547

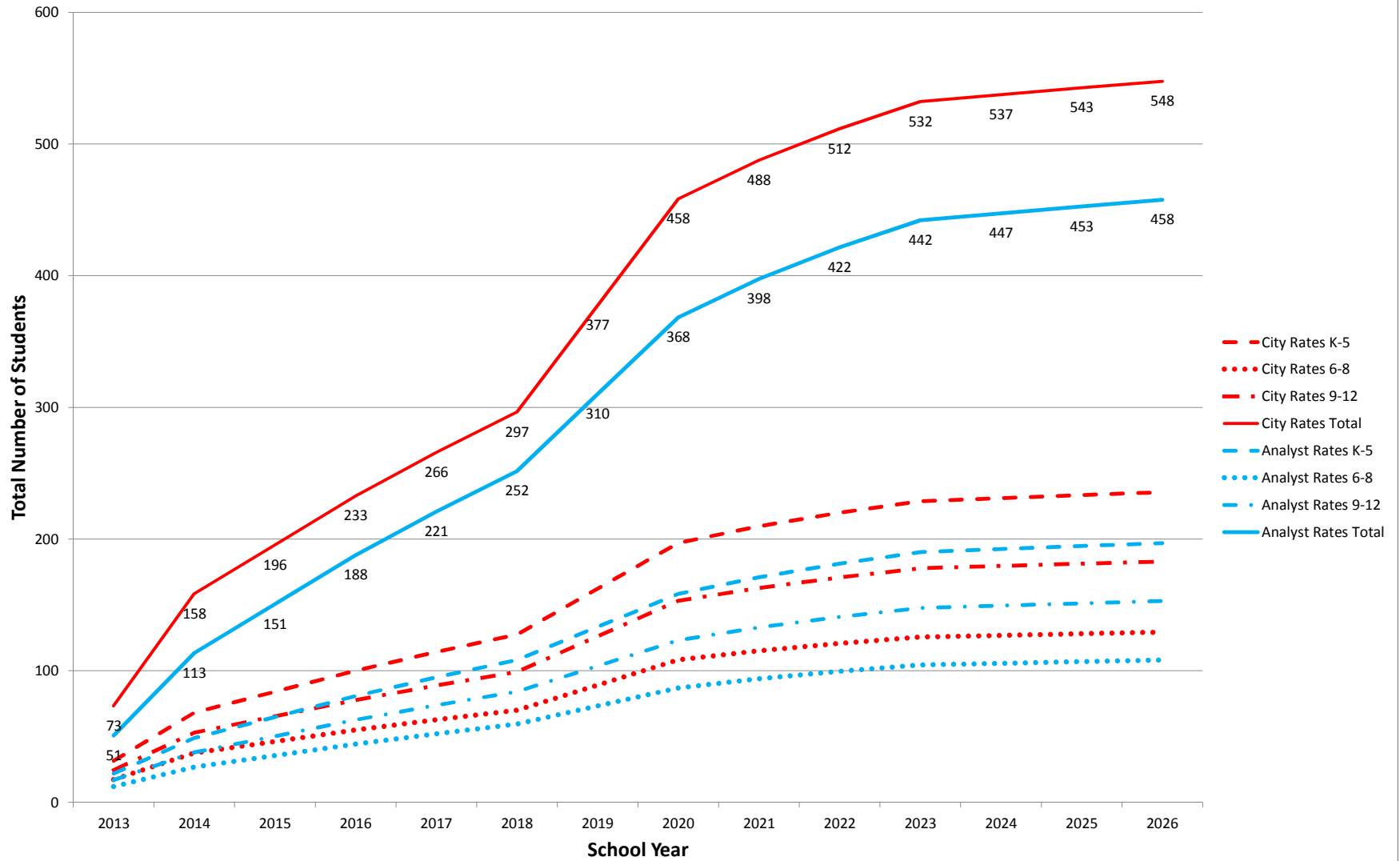
City Model	Total	Factor	2013	2014	2015	2016	2017	2018	2019	2020	2021	2022	2023	2024	2025	2026	Total
Large Lot SFD	55.08	0.51	2.55	7.65	7.65	7.65	6.12	6.12	5.1	5.1	5.1	2.04	0	0	0	0	55.08
Medium Lot SFD	35.19	0.51	5.1	7.65	7.65	7.65	5.1	2.04	0	0	0	0	0	0	0	0	35.19
Small Lot Cottages/Condos	109.56	0.44	6.6	8.8	11	11	11	11	11	11	11	8.8	8.36	0	0	0	109.56
Townhome Condos	91.59	0.43	6.45	8.6	8.6	8.6	8.6	8.6	8.6	8.6	8.6	8.6	7.74	0	0	0	91.59
Multiplex Condos	46.2	0.15	0	0	2.25	2.25	2.25	3	3.75	3.75	4.5	4.5	4.5	5.25	5.25	4.95	46.2
Garden Apartments	210	0.35	52.5	52.5	0	0	0	0	52.5	52.5	0	0	0	0	0	0	210
Total	547.62		73.2	85.2	37.15	37.15	33.07	30.76	80.95	80.95	29.2	23.94	20.6	5.25	5.25	4.95	547.62

Cummulative Students	Factor	2013	2014	2015	2016	2017	2018	2019	2020	2021	2022	2023	2024	2025	2026	
K-5	0.43	236	31	68	84	100	114	128	162	197	210	220	229	231	233	235
6-8	0.236	130	17	37	46	55	63	70	89	108	115	121	126	127	128	129
9-12	0.334	183	24	53	65	78	89	99	126	153	163	171	178	179	181	183
Total			73	158	196	233	266	297	377	458	488	512	532	537	543	548

Analyst Forecast	Total	Factor	2013	2014	2015	2016	2017	2018	2019	2020	2021	2022	2023	2024	2025	2026	Total
Large Lot SFD	55.08	0.51	2.55	7.65	7.65	7.65	6.12	6.12	5.1	5.1	5.1	2.04	0	0	0	0	55.08
Medium Lot SFD	35.19	0.51	5.1	7.65	7.65	7.65	5.1	2.04	0	0	0	0	0	0	0	0	35.19
Small Lot Cottages/Condos	109.56	0.44	6.6	8.8	11	11	11	11	11	11	11	8.8	8.36	0	0	0	109.56
Townhome Condos	91.59	0.43	6.45	8.6	8.6	8.6	8.6	8.6	8.6	8.6	8.6	8.6	7.74	0	0	0	91.59
Multiplex Condos	46.2	0.15	0	0	2.25	2.25	2.25	3	3.75	3.75	4.5	4.5	4.5	5.25	5.25	4.95	46.2
Garden Apartments	120	0.2	30	30	0	0	0	0	30	30	0	0	0	0	0	0	120
Total	457.62		50.7	62.7	37.15	37.15	33.07	30.76	58.45	58.45	29.2	23.94	20.6	5.25	5.25	4.95	457.62

Cummulative Students	Factor	2013	2014	2015	2016	2017	2018	2019	2020	2021	2022	2023	2024	2025	2026	
K-5	0.43	197	22	49	65	81	95	108	133	158	171	181	190	192	195	197
6-8	0.236	108	12	27	36	44	52	59	73	87	94	99	104	106	107	108
9-12	0.334	153	17	38	50	63	74	84	104	123	133	141	148	149	151	153
Total			51	113	151	188	221	252	310	368	398	422	442	447	453	458

Breckinridge - Projected Student Generation Rates



Proposed School Enrollment - No Breckinridge
Prepared by Kimley-Horn and Associates
19-Aug-11

		Southwest	Chittum	WB Prim	WB Inter	K-5 Totals	Jolliff MS	WB MS	Mid Totals	WBHS	Totals
2027	Capacity	500	600	675	725	2500	1250	1075	2325	2400	5975
	Growth	0.7	0.7	0.3	0.3	2	2.0	2.0	4	-7.0	-1
	Breckinridge	0	0	0	0	0	0	0	0	0	0
	Enrollment	551	715	644	781	2691	738	920	1658	2096	5707
	Delta	51	115	-31	56	191	-512	-155	-667	-304	-268
	Percent	110%	119%	95%	108%	108%	59%	86%	71%	87%	96%
2026	Capacity	500	600	675	725	2500	1250	1075	2325	2400	5975
	Growth	0.7	0.7	0.3	0.3	2	2.0	2.0	4	-7.0	-1
	Breckinridge	0	0	1	1	2	1	0	1	2	4
	Enrollment	550	714	644	781	2689	736	918	1654	2103	5710
	Delta	50	114	-31	56	189	-514	-157	-671	-297	-265
	Percent	110%	119%	95%	108%	108%	59%	85%	71%	88%	96%
2025	Capacity	500	600	675	725	2500	1250	1075	2325	2400	5975
	Growth	0.7	0.7	0.3	0.3	2	2.0	2.0	4	-7.0	-1
	Breckinridge	0	0	0	0	0	0	0	0	0	0
	Enrollment	549	713	643	780	2685	733	916	1649	2108	5709
	Delta	49	113	-32	55	185	-517	-159	-676	-292	-266
	Percent	110%	119%	95%	108%	107%	59%	85%	71%	88%	96%
2024	Capacity	500	600	675	725	2500	1250	1075	2325	2400	5975
	Growth	0.7	0.7	0.3	0.3	2	2.0	2.0	4	-7.0	-1
	Breckinridge	0	0	0	0	0	0	0	0	0	0
	Enrollment	549	713	642	779	2683	731	914	1645	2115	5712
	Delta	49	113	-33	54	183	-519	-161	-680	-285	-263
	Percent	110%	119%	95%	107%	107%	58%	85%	71%	88%	96%

Proposed School Enrollment - No Breckinridge
Prepared by Kimley-Horn and Associates
19-Aug-11

		Southwest	Chittum	WB Prim	WB Inter	K-5 Totals	Jolliff MS	WB MS	Mid Totals	WBHS	Totals
2023	Capacity	500	600	675	725	2500	1250	1075	2325	2400	5975
	Growth	0.7	0.7	0.3	0.3	2	2.0	2.0	4	-7.0	-1
	Breckinridge	0	0	0	0	0	0	0	0	0	0
	Enrollment	548	712	642	779	2681	729	912	1641	2122	5715
	Delta	48	112	-33	54	181	-521	-163	-684	-278	-260
	Percent	110%	119%	95%	107%	107%	58%	85%	71%	88%	96%
2022	Capacity	500	600	675	725	2500	1250	1075	2325	2400	5975
	Growth	0.7	0.7	0.3	0.3	2	2.0	2.0	4	-7.0	-1
	Breckinridge	0	0	0	0	0	0	0	0	0	0
	Enrollment	547	711	642	779	2679	727	910	1637	2129	5718
	Delta	47	111	-33	54	179	-523	-165	-688	-271	-257
	Percent	109%	119%	95%	107%	107%	58%	85%	70%	89%	96%
2021	Capacity	500	600	675	725	2500	1250	1075	2325	2400	5975
	Growth	0.7	0.7	0.3	0.3	2	2.0	2.0	4	-7.0	-1
	Breckinridge	0	0	0	0	0	0	0	0	0	0
	Enrollment	547	711	641	778	2677	725	908	1633	2136	5721
	Delta	47	111	-34	53	177	-525	-167	-692	-264	-254
	Percent	109%	118%	95%	107%	107%	58%	84%	70%	89%	96%
2020	Capacity	500	600	675	725	2500	1250	1075	2325	2400	5975
	Growth	0.7	0.7	0.3	0.3	2	2.0	2.0	4	-7.0	-1
	Breckinridge	0	0	0	0	0	0	0	0	0	0
	Enrollment	546	710	641	778	2675	723	906	1629	2143	5724
	Delta	46	110	-34	53	175	-527	-169	-696	-257	-251
	Percent	109%	118%	95%	107%	107%	58%	84%	70%	89%	96%

Proposed School Enrollment - No Breckinridge
Prepared by Kimley-Horn and Associates
19-Aug-11

		Southwest	Chittum	WB Prim	WB Inter	K-5 Totals	Jolliff MS	WB MS	Mid Totals	WBHS	Totals
2019	Capacity	500	600	675	725	2500	1250	1075	2325	2400	5975
	Growth	0.7	0.7	0.3	0.3	2	2.0	2.0	4	-7.0	-1
	Breckinridge	0	0	0	0	0	0	0	0	0	0
	Enrollment	545	709	641	778	2673	721	904	1625	2150	5727
	Delta	45	109	-34	53	173	-529	-171	-700	-250	-248
	Percent	109%	118%	95%	107%	107%	58%	84%	70%	90%	96%
2018	Capacity	500	600	675	725	2500	1250	1075	2325	2400	5975
	Growth	0.7	0.7	0.3	0.3	2	2.0	2.0	4	-7.0	-1
	Breckinridge	0	0	0	0	0	0	0	0	0	0
	Enrollment	545	709	640	777	2671	719	902	1621	2157	5730
	Delta	45	109	-35	52	171	-531	-173	-704	-243	-245
	Percent	109%	118%	95%	107%	107%	58%	84%	70%	90%	96%
2017	Capacity	500	600	675	725	2500	1250	1075	2325	2400	5975
	Growth	0.7	0.7	0.3	0.3	2	2.0	2.0	4	-7.0	-1
	Breckinridge	0	0	0	0	0	0	0	0	0	0
	Enrollment	544	708	640	777	2669	717	900	1617	2164	5733
	Delta	44	108	-35	52	169	-533	-175	-708	-236	-242
	Percent	109%	118%	95%	107%	107%	57%	84%	70%	90%	96%
2016	Capacity	500	600	675	725	2500	1250	1075	2325	2400	5975
	Growth	0.7	0.7	0.3	0.3	2	2.0	2.0	4	-7.0	-1
	Breckinridge	0	0	0	0	0	0	0	0	0	0
	Enrollment	543	707	640	777	2667	715	898	1613	2171	5736
	Delta	43	107	-35	52	167	-535	-177	-712	-229	-239
	Percent	109%	118%	95%	107%	107%	57%	84%	69%	90%	96%

Proposed School Enrollment - No Breckinridge
Prepared by Kimley-Horn and Associates
19-Aug-11

		Southwest	Chittum	WB Prim	WB Inter	K-5 Totals	Jolliff MS	WB MS	Mid Totals	WBHS	Totals
2015	Capacity	500	600	675	725	2500	1250	1075	2325	2400	5975
	Growth	0.7	0.7	0.3	0.3	2	2.0	2.0	4	-7.0	-1
	Breckinridge	0	0	0	0	0	0	0	0	0	0
	Enrollment	543	707	639	776	2665	713	896	1609	2178	5739
	Delta	43	107	-36	51	165	-537	-179	-716	-222	-236
	Percent	109%	118%	95%	107%	107%	57%	83%	69%	91%	96%
2014	Capacity	500	600	675	725	2500	1250	1075	2325	2400	5975
	Growth	0.7	0.7	0.3	0.3	2	2.0	2.0	4	-7.0	-1
	Breckinridge	0	0	0	0	0	0	0	0	0	0
	Enrollment	542	706	639	776	2663	711	894	1605	2185	5742
	Delta	42	106	-36	51	163	-539	-181	-720	-215	-233
	Percent	108%	118%	95%	107%	107%	57%	83%	69%	91%	96%
2013	Capacity	500	600	675	725	2500	1250	1075	2325	2400	5975
	Growth	0.7	0.7	0.3	0.3	2	2.0	2.0	4	-7.0	-1
	Breckinridge	0	0	0	0	0	0	0	0	0	0
	Enrollment	541	705	639	776	2661	709	892	1601	2192	5745
	Delta	41	105	-36	51	161	-541	-183	-724	-208	-230
	Percent	108%	118%	95%	107%	106%	57%	83%	69%	91%	96%
2012	Capacity	500	600	675	725	2500	1250	1075	2325	2400	5975
	Growth	0.7	0.7	0.3	0.3	2	2.0	2.0	4	-7.0	-1
	Breckinridge	0	0	0	0	0	0	0	0	0	0
	Enrollment	541	705	638	775	2659	707	890	1597	2199	5748
	Delta	41	105	-37	50	159	-543	-185	-728	-201	-227
	Percent	108%	117%	95%	107%	106%	57%	83%	69%	92%	96%
2011	Capacity	500	600	675	725	2500	1250	1075	2325	2400	5975
	Enrollment	540	704	638	775	2657	705	888	1593	2206	5751
	Delta	40	104	-37	50	157	-545	-187	-732	-194	-224
	Percent	108%	117%	95%	107%	106%	56%	83%	69%	92%	96%

Proposed School Enrollment - City Model (with Breckinridge)

Prepared by Kimley-Horn and Associates

19-Aug-11

		Southwest	Chittum	WB Prim	WB Inter	K-5 Totals	Jolliff MS	WB MS	Mid Totals	WBHS	Totals
Breckinridge Students		0%	100%	0%	0%		100%	0%		100%	
2027	Capacity	500	600	675	725	2500	1250	1075	2325	2400	5975
	Growth	0.7	0.7	0.3	0.3	2	2.0	2.0	4	-7.0	-1
	Breckinridge	0	0	0	0	0	0	0	0	0	0
	Enrollment	551	950	643	780	2924	866	920	1786	2277	6121
	Delta	51	350	-32	55	424	-384	-155	-539	-123	146
	Percent	110%	158%	95%	108%	117%	69%	86%	77%	95%	102%
2026	Capacity	500	600	675	725	2500	1250	1075	2325	2400	5975
	Growth	0.7	0.7	0.3	0.3	2	2.0	2.0	4	-7.0	-1
	Breckinridge	0	2	0	0	2	1	0	1	2	4
	Enrollment	550	949	643	780	2922	864	918	1782	2284	6124
	Delta	50	349	-32	55	422	-386	-157	-543	-116	149
	Percent	110%	158%	95%	108%	117%	69%	85%	77%	95%	103%
2025	Capacity	500	600	675	725	2500	1250	1075	2325	2400	5975
	Growth	0.7	0.7	0.3	0.3	2	2.0	2.0	4	-7.0	-1
	Breckinridge	0	2	0	0	2	1	0	1	2	4
	Enrollment	549	947	643	780	2918	861	916	1777	2289	6124
	Delta	49	347	-32	55	418	-389	-159	-548	-111	149
	Percent	110%	158%	95%	108%	117%	69%	85%	76%	95%	102%
2024	Capacity	500	600	675	725	2500	1250	1075	2325	2400	5975
	Growth	0.7	0.7	0.3	0.3	2	2.0	2.0	4	-7.0	-1
	Breckinridge	0	2	0	0	2	1	0	1	2	4
	Enrollment	549	944	642	779	2914	858	914	1772	2294	6123
	Delta	49	344	-33	54	414	-392	-161	-553	-106	148
	Percent	110%	157%	95%	107%	117%	69%	85%	76%	96%	102%

Proposed School Enrollment - City Model (with Breckinridge)

Prepared by Kimley-Horn and Associates

19-Aug-11

		Southwest	Chittum	WB Prim	WB Inter	K-5 Totals	Jolliff MS	WB MS	Mid Totals	WBHS	Totals
2023	Capacity	500	600	675	725	2500	1250	1075	2325	2400	5975
	Growth	0.7	0.7	0.3	0.3	2	2.0	2.0	4	-7.0	-1
	Breckinridge	0	9	0	0	9	5	0	5	7	16
	Enrollment	548	941	642	779	2910	855	912	1767	2300	6122
	Delta	48	341	-33	54	410	-395	-163	-558	-100	147
	Percent	110%	157%	95%	107%	116%	68%	85%	76%	96%	102%
2022	Capacity	500	600	675	725	2500	1250	1075	2325	2400	5975
	Growth	0.7	0.7	0.3	0.3	2	2.0	2.0	4	-7.0	-1
	Breckinridge	0	10	0	0	10	6	0	6	8	18
	Enrollment	547	931	642	779	2899	848	910	1758	2300	6109
	Delta	47	331	-33	54	399	-402	-165	-567	-100	134
	Percent	109%	155%	95%	107%	116%	68%	85%	76%	96%	102%
2021	Capacity	500	600	675	725	2500	1250	1075	2325	2400	5975
	Growth	0.7	0.7	0.3	0.3	2	2.0	2.0	4	-7.0	-1
	Breckinridge	0	13	0	0	13	7	0	7	10	22
	Enrollment	547	920	641	778	2887	840	908	1748	2299	6094
	Delta	47	320	-34	53	387	-410	-167	-577	-101	119
	Percent	109%	153%	95%	107%	115%	67%	84%	75%	96%	102%
2020	Capacity	500	600	675	725	2500	1250	1075	2325	2400	5975
	Growth	0.7	0.7	0.3	0.3	2	2.0	2.0	4	-7.0	-1
	Breckinridge	0	35	0	0	35	19	0	19	27	62
	Enrollment	546	907	641	778	2872	831	906	1737	2296	6074
	Delta	46	307	-34	53	372	-419	-169	-588	-104	99
	Percent	109%	151%	95%	107%	115%	66%	84%	75%	96%	102%

Proposed School Enrollment - City Model (with Breckinridge)

Prepared by Kimley-Horn and Associates

19-Aug-11

		Southwest	Chittum	WB Prim	WB Inter	K-5 Totals	Jolliff MS	WB MS	Mid Totals	WBHS	Totals
2019	Capacity	500	600	675	725	2500	1250	1075	2325	2400	5975
	Growth	0.7	0.7	0.3	0.3	2	2.0	2.0	4	-7.0	-1
	Breckinridge	0	35	0	0	35	19	0	19	27	62
	Enrollment	545	872	641	778	2835	810	904	1714	2276	6015
	Delta	45	272	-34	53	335	-440	-171	-611	-124	40
	Percent	109%	145%	95%	107%	113%	65%	84%	74%	95%	101%
2018	Capacity	500	600	675	725	2500	1250	1075	2325	2400	5975
	Growth	0.7	0.7	0.3	0.3	2	2.0	2.0	4	-7.0	-1
	Breckinridge	0	13	0	0	13	7	0	7	10	24
	Enrollment	545	836	640	777	2799	789	902	1691	2256	5957
	Delta	45	236	-35	52	299	-461	-173	-634	-144	-18
	Percent	109%	139%	95%	107%	112%	63%	84%	73%	94%	100%
2017	Capacity	500	600	675	725	2500	1250	1075	2325	2400	5975
	Growth	0.7	0.7	0.3	0.3	2	2.0	2.0	4	-7.0	-1
	Breckinridge	0	14	0	0	14	8	0	8	11	25
	Enrollment	544	822	640	777	2783	780	900	1680	2253	5936
	Delta	44	222	-35	52	283	-470	-175	-645	-147	-39
	Percent	109%	137%	95%	107%	111%	62%	84%	72%	94%	99%
2016	Capacity	500	600	675	725	2500	1250	1075	2325	2400	5975
	Growth	0.7	0.7	0.3	0.3	2	2.0	2.0	4	-7.0	-1
	Breckinridge	0	16	0	0	16	9	0	9	12	28
	Enrollment	543	807	640	777	2767	770	898	1668	2249	5914
	Delta	43	207	-35	52	267	-480	-177	-657	-151	-61
	Percent	109%	135%	95%	107%	111%	62%	84%	72%	94%	99%

Proposed School Enrollment - City Model (with Breckinridge)

Prepared by Kimley-Horn and Associates

19-Aug-11

		Southwest	Chittum	WB Prim	WB Inter	K-5 Totals	Jolliff MS	WB MS	Mid Totals	WBHS	Totals
2015	Capacity	500	600	675	725	2500	1250	1075	2325	2400	5975
	Growth	0.7	0.7	0.3	0.3	2	2.0	2.0	4	-7.0	-1
	Breckinridge	0	16	0	0	16	9	0	9	12	28
	Enrollment	543	791	639	776	2749	759	896	1655	2243	5888
	Delta	43	191	-36	51	249	-491	-179	-670	-157	-87
	Percent	109%	132%	95%	107%	110%	61%	83%	71%	93%	99%
2014	Capacity	500	600	675	725	2500	1250	1075	2325	2400	5975
	Growth	0.7	0.7	0.3	0.3	2	2.0	2.0	4	-7.0	-1
	Breckinridge	0	37	0	0	37	20	0	20	28	65
	Enrollment	542	774	639	776	2731	748	894	1642	2238	5863
	Delta	42	174	-36	51	231	-502	-181	-683	-162	-112
	Percent	108%	129%	95%	107%	109%	60%	83%	71%	93%	98%
2013	Capacity	500	600	675	725	2500	1250	1075	2325	2400	5975
	Growth	0.7	0.7	0.3	0.3	2	2.0	2.0	4	-7.0	-1
	Breckinridge	0	31	0	0	31	17	0	17	24	56
	Enrollment	541	737	639	776	2692	726	892	1618	2216	5801
	Delta	41	137	-36	51	192	-524	-183	-707	-184	-174
	Percent	108%	123%	95%	107%	108%	58%	83%	70%	92%	97%
2012	Capacity	500	600	675	725	2500	1250	1075	2325	2400	5975
	Growth	0.7	0.7	0.3	0.3	2	2.0	2.0	4	-7.0	-1
	Breckinridge	0	0	0	0	0	0	0	0	0	0
	Enrollment	541	705	638	775	2659	707	890	1597	2199	5748
	Delta	41	105	-37	50	159	-543	-185	-728	-201	-227
	Percent	108%	117%	95%	107%	106%	57%	83%	69%	92%	96%
2011	Capacity	500	600	675	725	2500	1250	1075	2325	2400	5975
	Enrollment	540	704	638	775	2657	705	888	1593	2206	5751
	Delta	40	104	-37	50	157	-545	-187	-732	-194	-224
	Percent	108%	117%	95%	107%	106%	56%	83%	69%	92%	96%

Proposed School Enrollment - Analyst Model (with Breckinridge)

Prepared by Kimley-Horn and Associates

19-Aug-11

		Southwest	Chittum	WB Prim	WB Inter	K-5 Totals	Jolliff MS	WB MS	Mid Totals	WBHS	Totals
Breckinridge Students		0%	100%	0%	0%		100%	0%		100%	
2027	Capacity	500	600	675	725	2500	1250	1075	2325	2400	5975
	Growth	0.7	0.7	0.3	0.3	2	2.0	2.0	4	-7.0	-1
	Breckinridge	0	0	0	0	0	0	0	0	0	0
	Enrollment	551	911	643	780	2886	845	920	1765	2247	6053
	Delta	51	311	-32	55	386	-405	-155	-560	-153	78
	Percent	110%	152%	95%	108%	115%	68%	86%	76%	94%	101%
2026	Capacity	500	600	675	725	2500	1250	1075	2325	2400	5975
	Growth	0.7	0.7	0.3	0.3	2	2.0	2.0	4	-7.0	-1
	Breckinridge	0	2	0	0	2	1	0	1	2	4
	Enrollment	550	911	643	780	2884	843	918	1761	2254	6056
	Delta	50	311	-32	55	384	-407	-157	-564	-146	81
	Percent	110%	152%	95%	108%	115%	67%	85%	76%	94%	101%
2025	Capacity	500	600	675	725	2500	1250	1075	2325	2400	5975
	Growth	0.7	0.7	0.3	0.3	2	2.0	2.0	4	-7.0	-1
	Breckinridge	0	2	0	0	2	1	0	1	2	4
	Enrollment	549	908	643	780	2880	840	916	1756	2259	6055
	Delta	49	308	-32	55	380	-410	-159	-569	-141	80
	Percent	110%	151%	95%	108%	115%	67%	85%	76%	94%	101%
2024	Capacity	500	600	675	725	2500	1250	1075	2325	2400	5975
	Growth	0.7	0.7	0.3	0.3	2	2.0	2.0	4	-7.0	-1
	Breckinridge	0	2	0	0	2	1	0	1	2	4
	Enrollment	549	905	642	779	2875	837	914	1751	2264	6054
	Delta	49	305	-33	54	375	-413	-161	-574	-136	79
	Percent	110%	151%	95%	107%	115%	67%	85%	75%	94%	101%

Proposed School Enrollment - Analyst Model (with Breckinridge)

Prepared by Kimley-Horn and Associates

19-Aug-11

		Southwest	Chittum	WB Prim	WB Inter	K-5 Totals	Jolliff MS	WB MS	Mid Totals	WBHS	Totals
2023	Capacity	500	600	675	725	2500	1250	1075	2325	2400	5975
	Growth	0.7	0.7	0.3	0.3	2	2.0	2.0	4	-7.0	-1
	Breckinridge	0	9	0	0	9	5	0	5	7	16
	Enrollment	548	902	642	779	2871	833	912	1745	2270	6053
	Delta	48	302	-33	54	371	-417	-163	-580	-130	78
	Percent	110%	150%	95%	107%	115%	67%	85%	75%	95%	101%
2022	Capacity	500	600	675	725	2500	1250	1075	2325	2400	5975
	Growth	0.7	0.7	0.3	0.3	2	2.0	2.0	4	-7.0	-1
	Breckinridge	0	10	0	0	10	6	0	6	8	18
	Enrollment	547	893	642	779	2860	826	910	1736	2270	6040
	Delta	47	293	-33	54	360	-424	-165	-589	-130	65
	Percent	109%	149%	95%	107%	114%	66%	85%	75%	95%	101%
2021	Capacity	500	600	675	725	2500	1250	1075	2325	2400	5975
	Growth	0.7	0.7	0.3	0.3	2	2.0	2.0	4	-7.0	-1
	Breckinridge	0	13	0	0	13	7	0	7	10	22
	Enrollment	547	882	641	778	2848	819	908	1727	2269	6025
	Delta	47	282	-34	53	348	-431	-167	-598	-131	50
	Percent	109%	147%	95%	107%	114%	66%	84%	74%	95%	101%
2020	Capacity	500	600	675	725	2500	1250	1075	2325	2400	5975
	Growth	0.7	0.7	0.3	0.3	2	2.0	2.0	4	-7.0	-1
	Breckinridge	0	25	0	0	25	14	0	14	20	45
	Enrollment	546	868	641	778	2833	810	906	1716	2266	6005
	Delta	46	268	-34	53	333	-440	-169	-609	-134	30
	Percent	109%	145%	95%	107%	113%	65%	84%	74%	94%	101%

Proposed School Enrollment - Analyst Model (with Breckinridge)

Prepared by Kimley-Horn and Associates

19-Aug-11

		Southwest	Chittum	WB Prim	WB Inter	K-5 Totals	Jolliff MS	WB MS	Mid Totals	WBHS	Totals
2019	Capacity	500	600	675	725	2500	1250	1075	2325	2400	5975
	Growth	0.7	0.7	0.3	0.3	2	2.0	2.0	4	-7.0	-1
	Breckinridge	0	25	0	0	25	14	0	14	20	45
	Enrollment	545	843	641	778	2806	794	904	1698	2254	5964
	Delta	45	243	-34	53	306	-456	-171	-627	-146	-11
	Percent	109%	140%	95%	107%	112%	64%	84%	73%	94%	100%
2018	Capacity	500	600	675	725	2500	1250	1075	2325	2400	5975
	Growth	0.7	0.7	0.3	0.3	2	2.0	2.0	4	-7.0	-1
	Breckinridge	0	13	0	0	13	7	0	7	10	24
	Enrollment	545	817	640	777	2779	778	902	1680	2241	5922
	Delta	45	217	-35	52	279	-472	-173	-645	-159	-53
	Percent	109%	136%	95%	107%	111%	62%	84%	72%	93%	99%
2017	Capacity	500	600	675	725	2500	1250	1075	2325	2400	5975
	Growth	0.7	0.7	0.3	0.3	2	2.0	2.0	4	-7.0	-1
	Breckinridge	0	14	0	0	14	8	0	8	11	25
	Enrollment	544	803	640	777	2764	769	900	1669	2238	5902
	Delta	44	203	-35	52	264	-481	-175	-656	-162	-73
	Percent	109%	134%	95%	107%	111%	62%	84%	72%	93%	99%
2016	Capacity	500	600	675	725	2500	1250	1075	2325	2400	5975
	Growth	0.7	0.7	0.3	0.3	2	2.0	2.0	4	-7.0	-1
	Breckinridge	0	16	0	0	16	9	0	9	12	28
	Enrollment	543	788	640	777	2748	759	898	1657	2234	5879
	Delta	43	188	-35	52	248	-491	-177	-668	-166	-96
	Percent	109%	131%	95%	107%	110%	61%	84%	71%	93%	98%

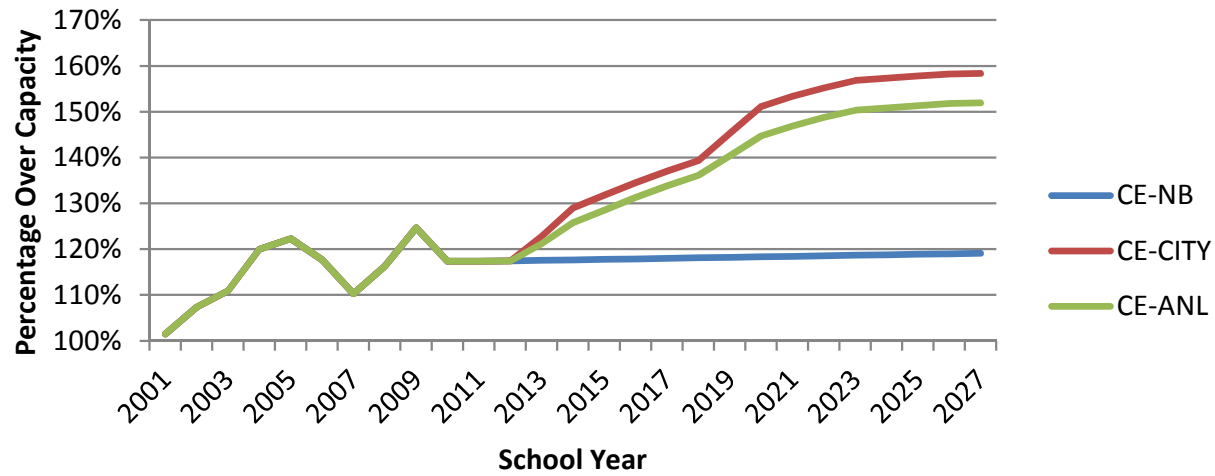
Proposed School Enrollment - Analyst Model (with Breckinridge)

Prepared by Kimley-Horn and Associates

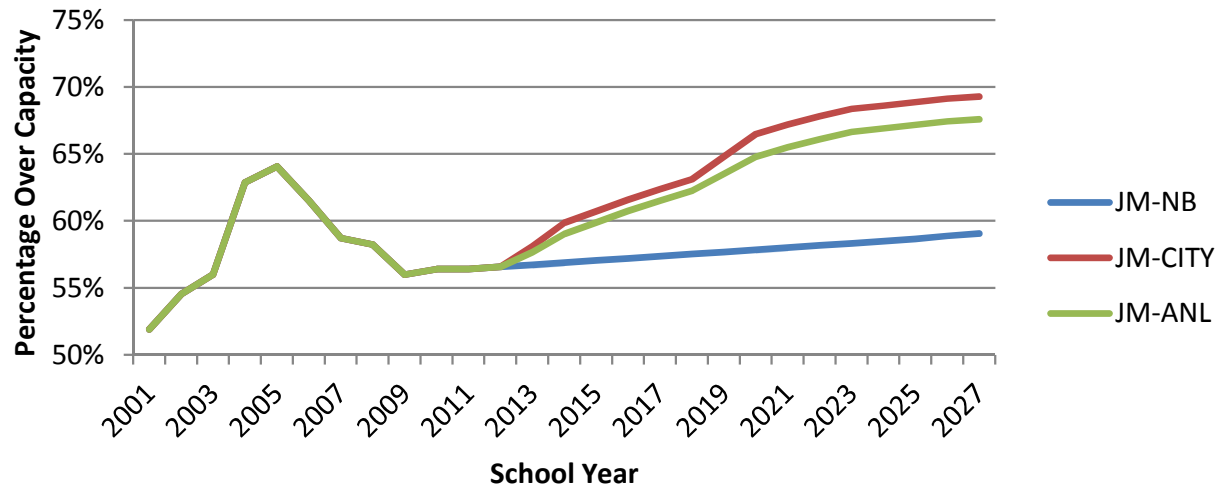
19-Aug-11

		Southwest	Chittum	WB Prim	WB Inter	K-5 Totals	Jolliff MS	WB MS	Mid Totals	WBHS	Totals
2015	Capacity	500	600	675	725	2500	1250	1075	2325	2400	5975
	Growth	0.7	0.7	0.3	0.3	2	2.0	2.0	4	-7.0	-1
	Breckinridge	0	16	0	0	16	9	0	9	12	28
	Enrollment	543	771	639	776	2730	749	896	1645	2228	5854
	Delta	43	171	-36	51	230	-501	-179	-680	-172	-121
	Percent	109%	129%	95%	107%	109%	60%	83%	71%	93%	98%
2014	Capacity	500	600	675	725	2500	1250	1075	2325	2400	5975
	Growth	0.7	0.7	0.3	0.3	2	2.0	2.0	4	-7.0	-1
	Breckinridge	0	27	0	0	27	15	0	15	21	48
	Enrollment	542	755	639	776	2712	738	894	1632	2223	5829
	Delta	42	155	-36	51	212	-512	-181	-693	-177	-146
	Percent	108%	126%	95%	107%	108%	59%	83%	70%	93%	98%
2013	Capacity	500	600	675	725	2500	1250	1075	2325	2400	5975
	Growth	0.7	0.7	0.3	0.3	2	2.0	2.0	4	-7.0	-1
	Breckinridge	0	22	0	0	22	12	0	12	17	39
	Enrollment	541	727	639	776	2683	721	892	1613	2209	5784
	Delta	41	127	-36	51	183	-529	-183	-712	-191	-191
	Percent	108%	121%	95%	107%	107%	58%	83%	69%	92%	97%
2012	Capacity	500	600	675	725	2500	1250	1075	2325	2400	5975
	Growth	0.7	0.7	0.3	0.3	2	2.0	2.0	4	-7.0	-1
	Breckinridge	0	0	0	0	0	0	0	0	0	0
	Enrollment	541	705	638	775	2659	707	890	1597	2199	5748
	Delta	41	105	-37	50	159	-543	-185	-728	-201	-227
	Percent	108%	117%	95%	107%	106%	57%	83%	69%	92%	96%
2011	Capacity	500	600	675	725	2500	1250	1075	2325	2400	5975
	Enrollment	540	704	638	775	2657	705	888	1593	2206	5751
	Delta	40	104	-37	50	157	-545	-187	-732	-194	-224
	Percent	108%	117%	95%	107%	106%	56%	83%	69%	92%	96%

Chittum Elementary



Jolliff Middle



Western Branch High School

